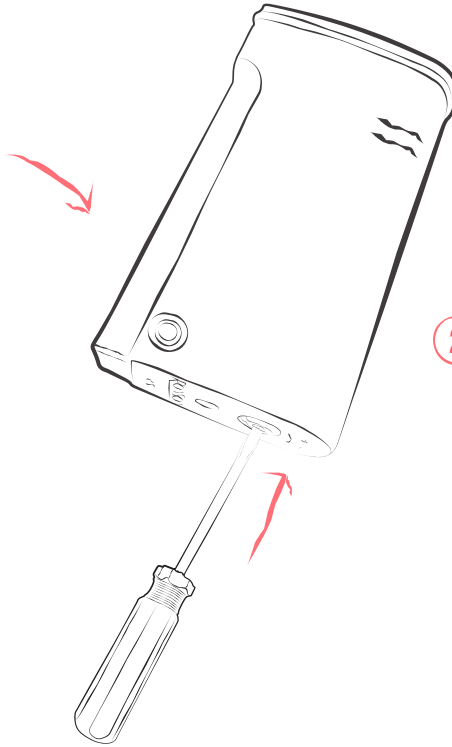
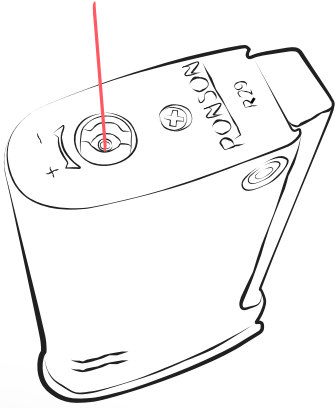


RONSON®

De-Gassing The Tank

Butane fuelled lighters

- 1 Locate the inlet valve on the base of the lighter body.



- 2 Hold the lighter with the inlet valve pointing downwards.

Using a small pointed tool depress the inlet valve into the lighter.



Note that butane is heavier than air. This will release the butane from the internal tank.

If you are returning your lighter for servicing you will need to repeat this procedure several times to completely empty the tank.

